

# LENOVO SMART CLOCK 2 WITH WIRELESS CHARGING DOCK

THE BEST BEDROOM SMART CLOCK JUST GOT EVEN BETTER.



## See what you need with a quick glimpse

With 4" color touchscreen the Lenovo Smart Clock 2 showcases the time, weather and your family photos with a choice of customizable clock faces. Get more done hands-free, set reminders & alarms, get answers, check the traffic, and more. Just ask Google.



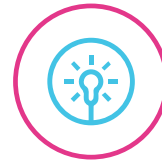
## Kickstart your day, unwind in the evening

Start your day better and keep on top of your daily tasks & schedule. Ask Google to play music, check your next meeting time, and more. Do more with a single command with the "good night" Routine: turn off the lights, lock the doors, play some relaxing music, and more.



## Keeping your devices charged overnight

When docked the Lenovo Smart Clock 2's wireless charging dock can deliver a fast charge for your phone while you rest undistracted throughout the night.



## Just the right amount of light at night

Enhanced with a built-in nightlight when docked. The light is just bright enough to illuminate your way without waking your partner.

## SPECIFICATIONS

### LENOVO SMART CLOCK 2

<b>Processor</b>	: MediaTek MT8167S
<b>Operating System</b>	: Google Assistant
<b>Speaker</b>	: 1.5" 3W Front-Firing Speakers
<b>Microphone</b>	: 1 x Farfield Microphone Array
<b>RAM + ROM</b>	: RAM 1 GB + Flash 8 GB
<b>WLAN</b>	: 802.11 b/g/n, 2.4 GHz
<b>Bluetooth®</b>	: Bluetooth® 4.2
<b>Display</b>	: 4" LCD IPS
<b>Weight</b>	: Starting at 298 g (0.66 lbs)
<b>Exterior Materials</b>	: Soft Touch Fabric
<b>Mute</b>	: Microphone Mute Toggle
<b>Touch</b>	: Touchscreen
<b>Buttons</b>	: Volume +/-
<b>Sensor</b>	: L-Sensor, G-Sensor
<b>Expandability</b>	: Docking Capable with Pogo Pin

### WIRELESS CHARGING DOCK

<b>Ports</b>	: USB-A, Pogo Pin
<b>Wireless Charger</b>	: 5W, 7.5W, 10W Fast Charging
<b>Nightlight</b>	: 11 Lumens
<b>Wireless Charging</b>	: Yes
<b>Magnetic</b>	: MagSafe Compatible

### WHAT'S IN THE BOX

- Lenovo Smart Clock 2
- Wireless Charging Dock\*
- AC Adapter

\* Sold in bundle SKU or separately.



### COLOR OPTIONS



Abyss Blue



Heather Grey



Shadow Black



[ACCESSORYSMARTFIND.LENOVO.COM](https://www.lenovo.com/accessorysmartfind)

Lenovo reserves the right to alter product offerings and specifications at any time, without notice. Lenovo makes every effort to ensure accuracy of all information but is not liable or responsible for any editorial, photographic, or typographic errors. All images are for illustration purposes only. For full Lenovo product, service, and warranty specifications, visit [www.lenovo.com](http://www.lenovo.com). Lenovo makes no representations or warranties regarding third-party products or services. **Trademarks:** The following are trademarks or registered trademarks of Lenovo: Lenovo, the Lenovo logo, Rescue and Recovery, ThinkPad, ThinkCentre, ThinkStation, ThinkServer, ThinkVantage, and ThinkVision. Other company, product, and service names may be trademarks or service marks of others. Battery life (and recharge times) will vary based on many factors, including system settings and usage. Visit [www.lenovo.com/lenovo/us/en/safecomp/](http://www.lenovo.com/lenovo/us/en/safecomp/) periodically for the latest information on safe and effective computing. ©2021 Lenovo. All rights reserved.

Lenovo